

Dissolving page template 2

This page: instructions

Second page: cover sleeve template.

Third page: movable mechanism.

You'll need

2 pieces of cover stock paper

2 pictures, at least 3"×2½" (or use the pictures on the fourth page of this PDF)

xacto knife

glue stick

metal ruler is handy to guide the xacto knife when you're cutting

awl, thick needle or push pin

Illustrated instructions are at http://www.greenchairpress.com/blog/?page_id=2020

Instructions:

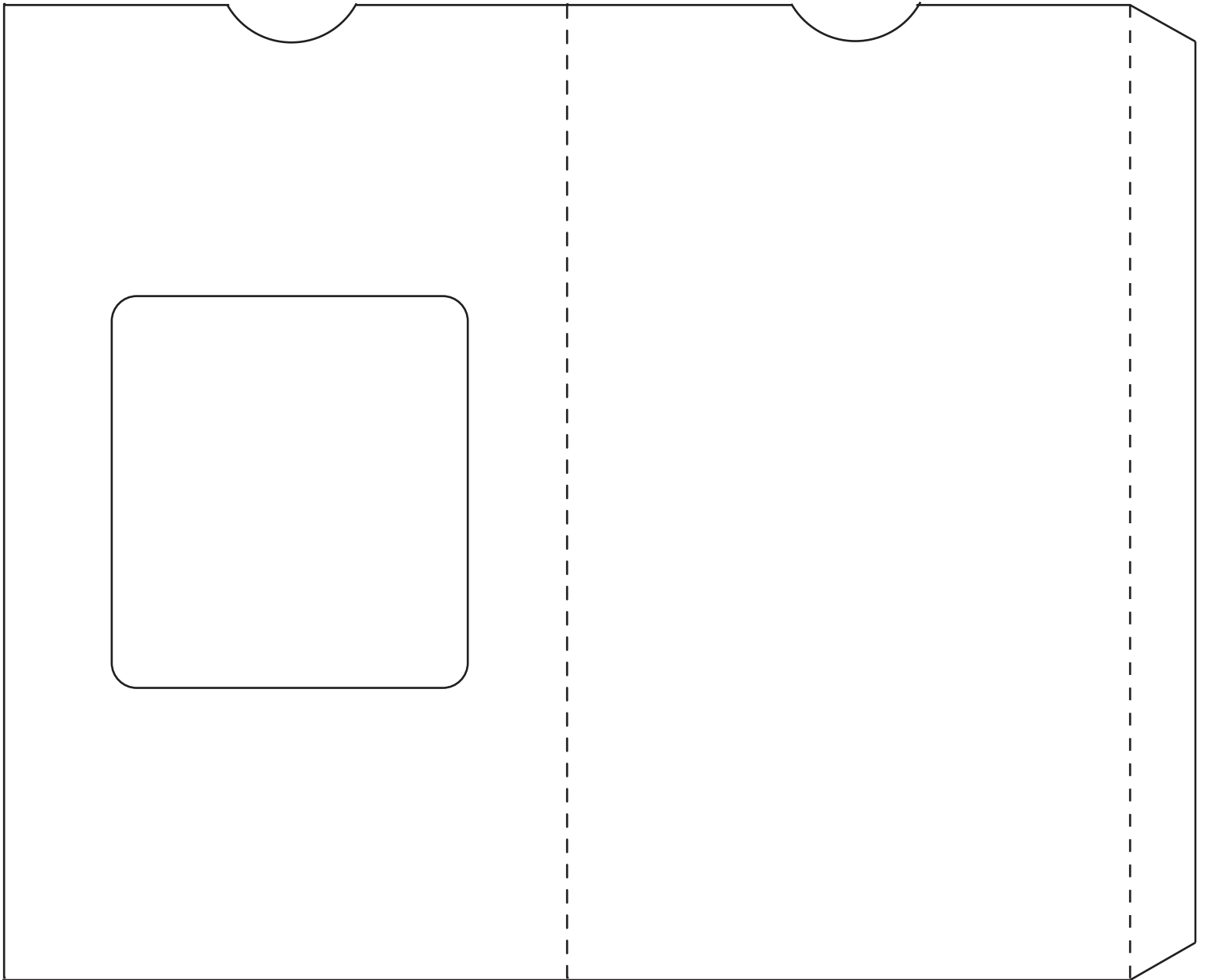
1. Print page 2 on cover stock paper. Cut out the template along the solid lines, fold along the dotted line and set aside. If you want to use the pictures in this PDF, print the 4th page and cut out the pictures.
2. Print page 3 on cover stock paper.
3. With your awl, needle or push pin, make holes in the paper at the red dots. Turn the paper over and glue your pictures onto the paper so that the part you want to dissolve is centered in the box made by the pin pricks. Picture A, which you'll see when the mechanism is closed, goes in the top box. Picture B, the dissolve, goes in the lower box.
4. Turn the page over and cut along the solid lines. Use a sharp xacto knife, taking care to cleanly cut the joints. Cutting against a metal ruler will help you keep the incisions straight. Be sure to cut through both the template and your glued-on picture.
5. Score, fold & glue the pull tab on the moving piece.
6. Turn the templates over. Place the "stationary" piece on top of the moving piece (picture sides up) & thread it onto the moving piece, so that picture A is completely visible and the top of each piece aligns. Adjust the position of the mechanism so that the outer cut lines on the top picture align with the cutout window.
7. Put glue on the sides of the top picture, taking care not to get glue on the cuts or bottom mechanism. Put glue on the folded tab of the cover sleeve. Close the cover and use a bone folder or your hand to seal the glue. You're done. Carefully pull the tab out to see the second picture. You may need to wiggle the tab a bit the first time to get the mechanism moving. The glue on the top picture and the fold-over tab should keep the mechanism from falling out of the sleeve.

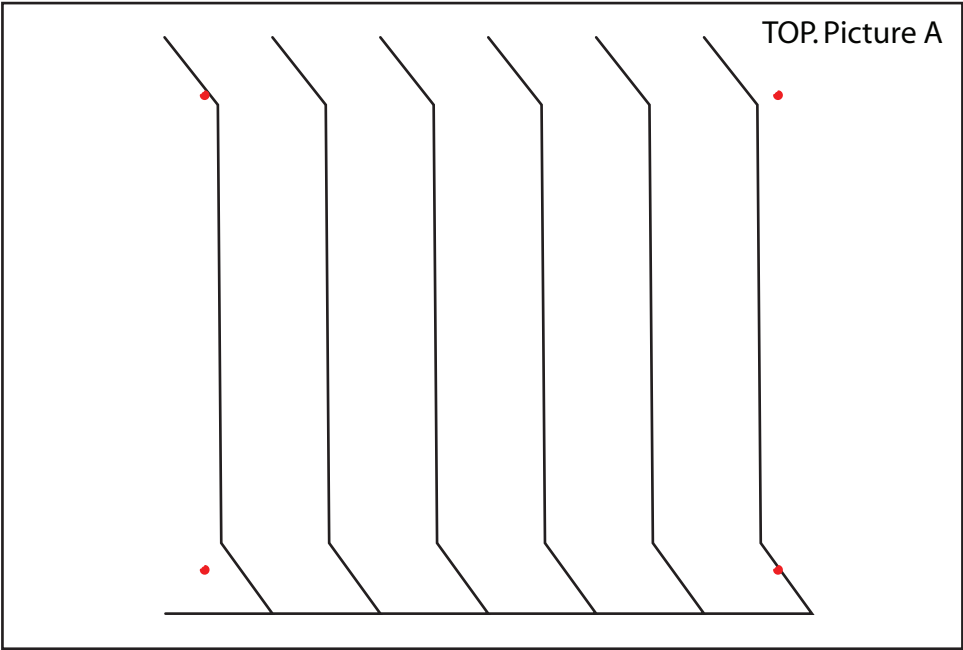
Susan Angebrannt

Green Chair Press

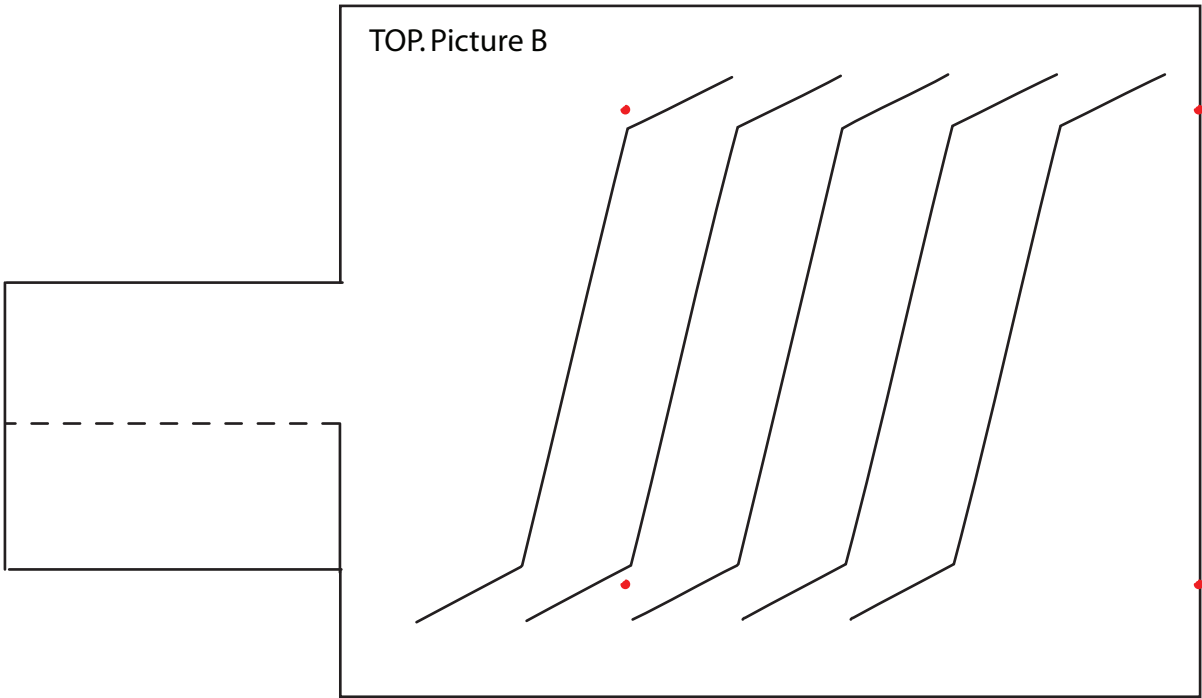
www.greenchairpress.com Green Chair Press

www.greenchairpress.com





STATIONARY



MOVING

